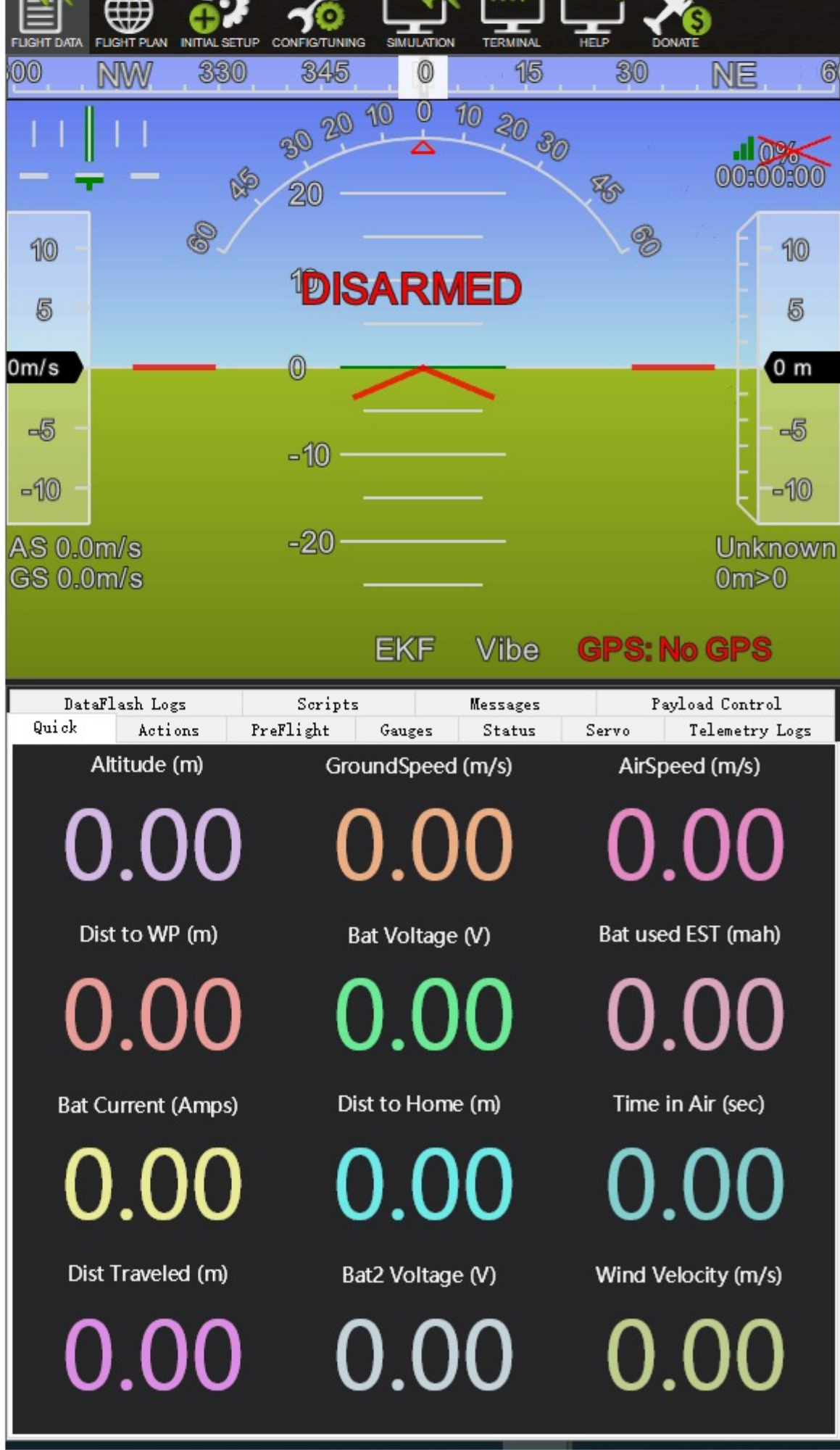


Product	Max/min Voltage/time			FIXED WING MODE	
	VTOL Battery	Low Voltage	VTOL Time	Cruise Battery	Low Voltage
Nimbus VTOL	Lipo 6s2200x1	21V	90s(Max)	6s Lipo: 20.5V12s Lipo: 41V 6s Li-ion: 18V	12s Li-ion: 36V
Baby Shark	Lipo 6s5000x2	42V			
Great Shark	Lipo 6s8000x2		120s(Max)		

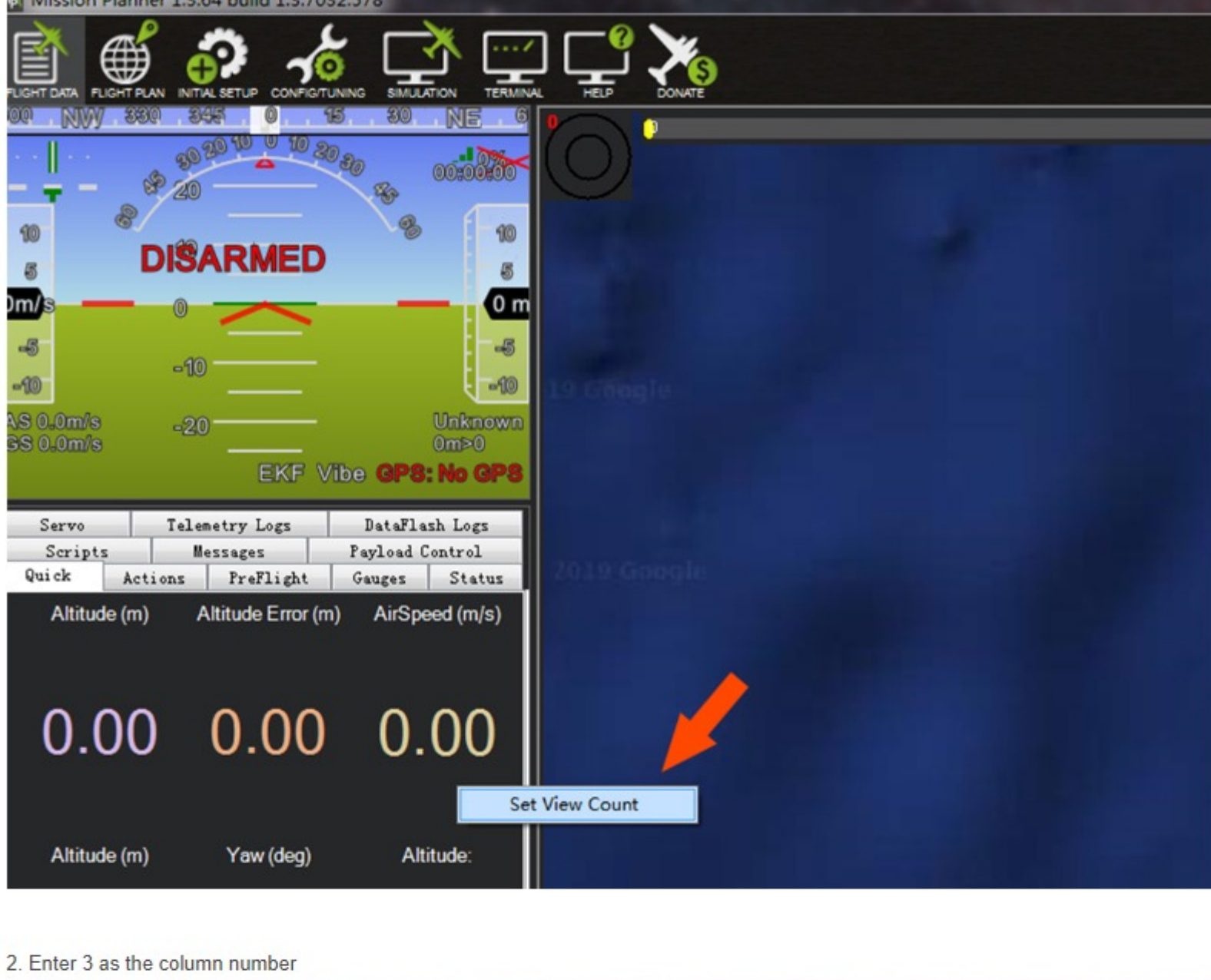
- The suggested max/min values are boundary values, which means the displayed values are to be stay within the range, otherwise it could lead to drone malfunctions, or worse. So please find the values that match your drone, and pay GREAT attention on displayed Voltage and Vtol flight time to make sure they don't exceed the limits. (the values are displayed at the lower left section of MP initial interface)
- Also please keep in mind that change the VTOL battery (Lipo battery) after each flight, for there could be insufficient battery power left for your next VTOL flight.



Five steps of setting the lower left menu items:

(ps. Please set the 12 menu items in accordance with the items and its corresponding sequence that are demonstrated above)

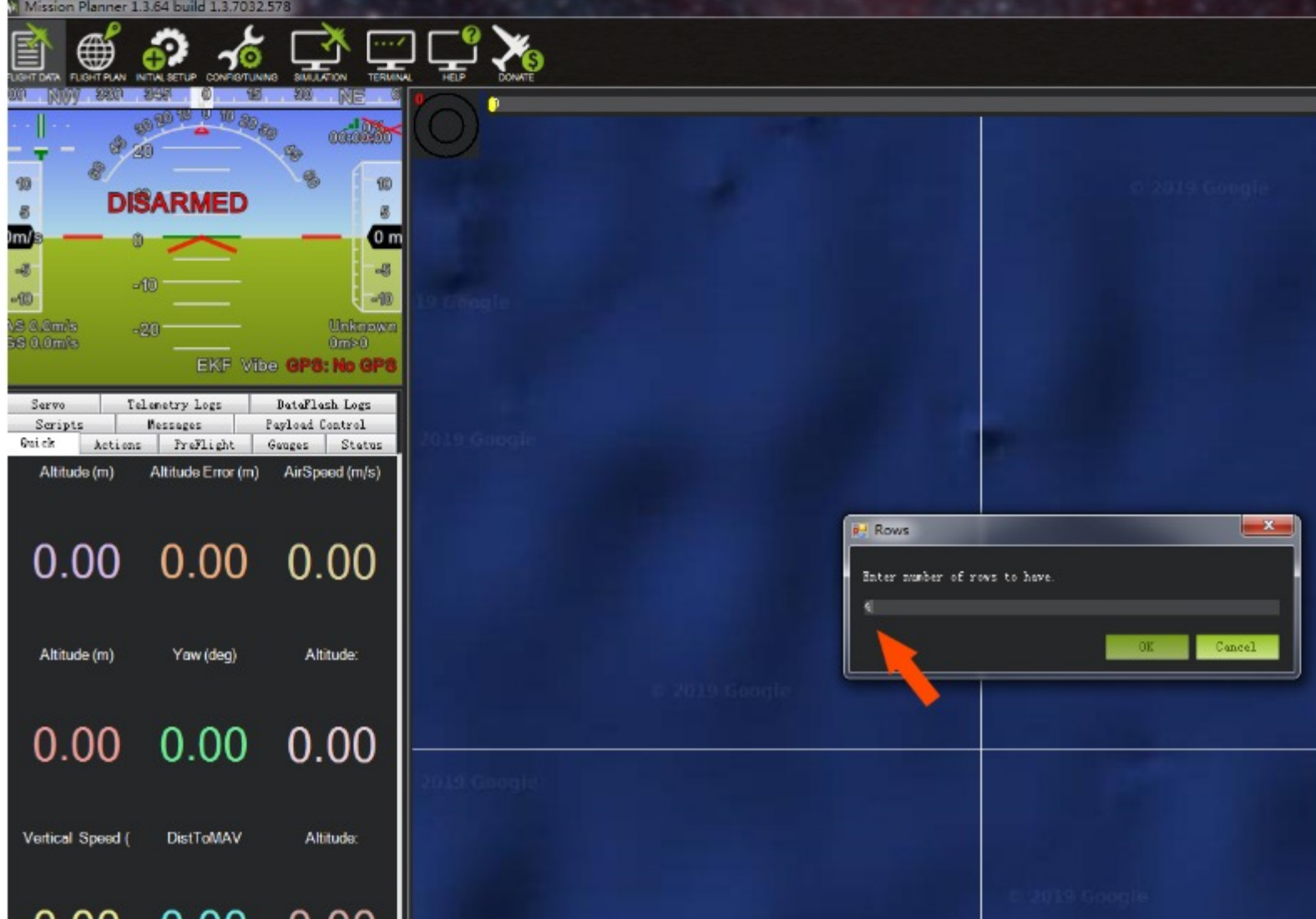
1. Right click the lower left section--set view count



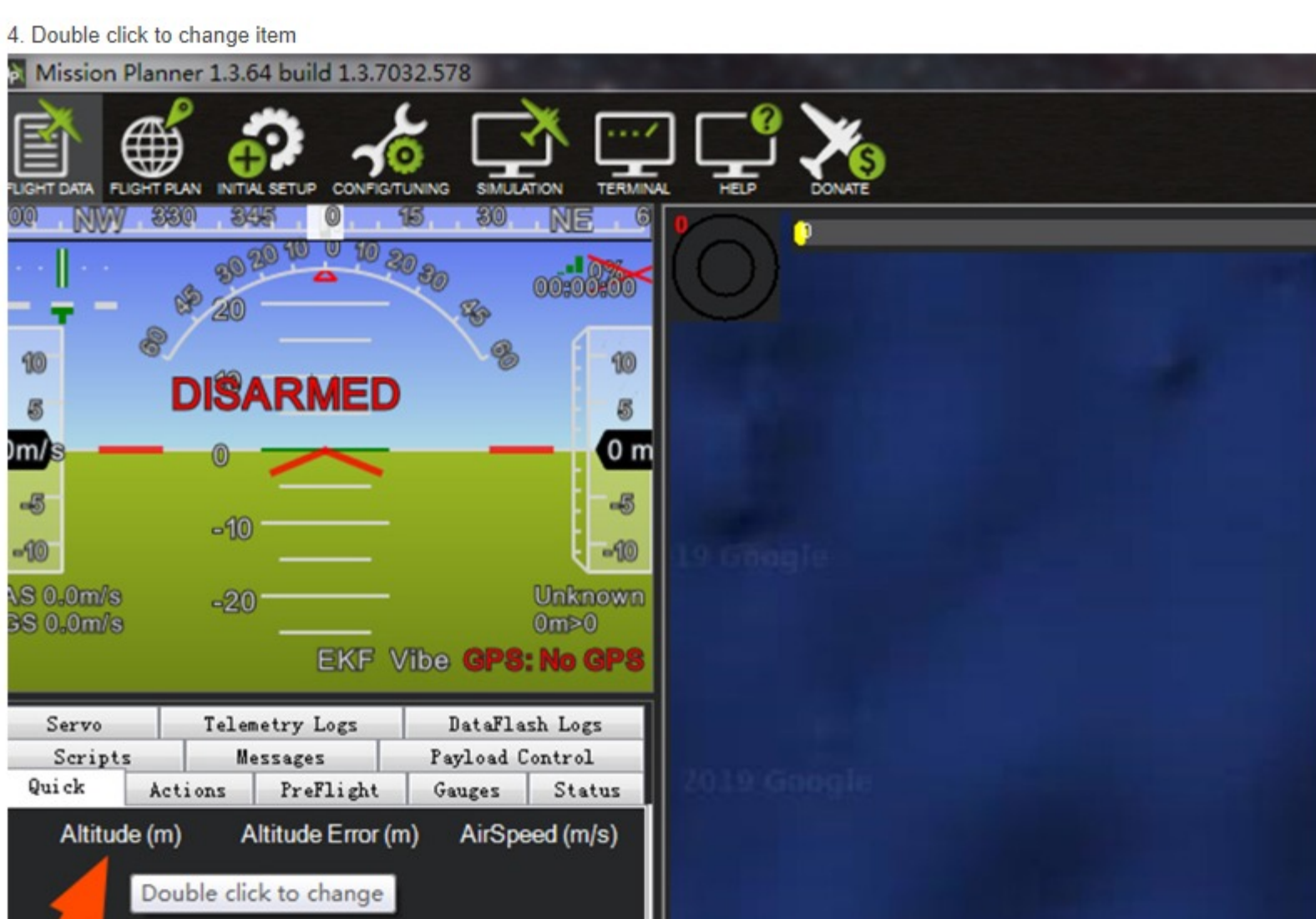
2. Enter 3 as the column number



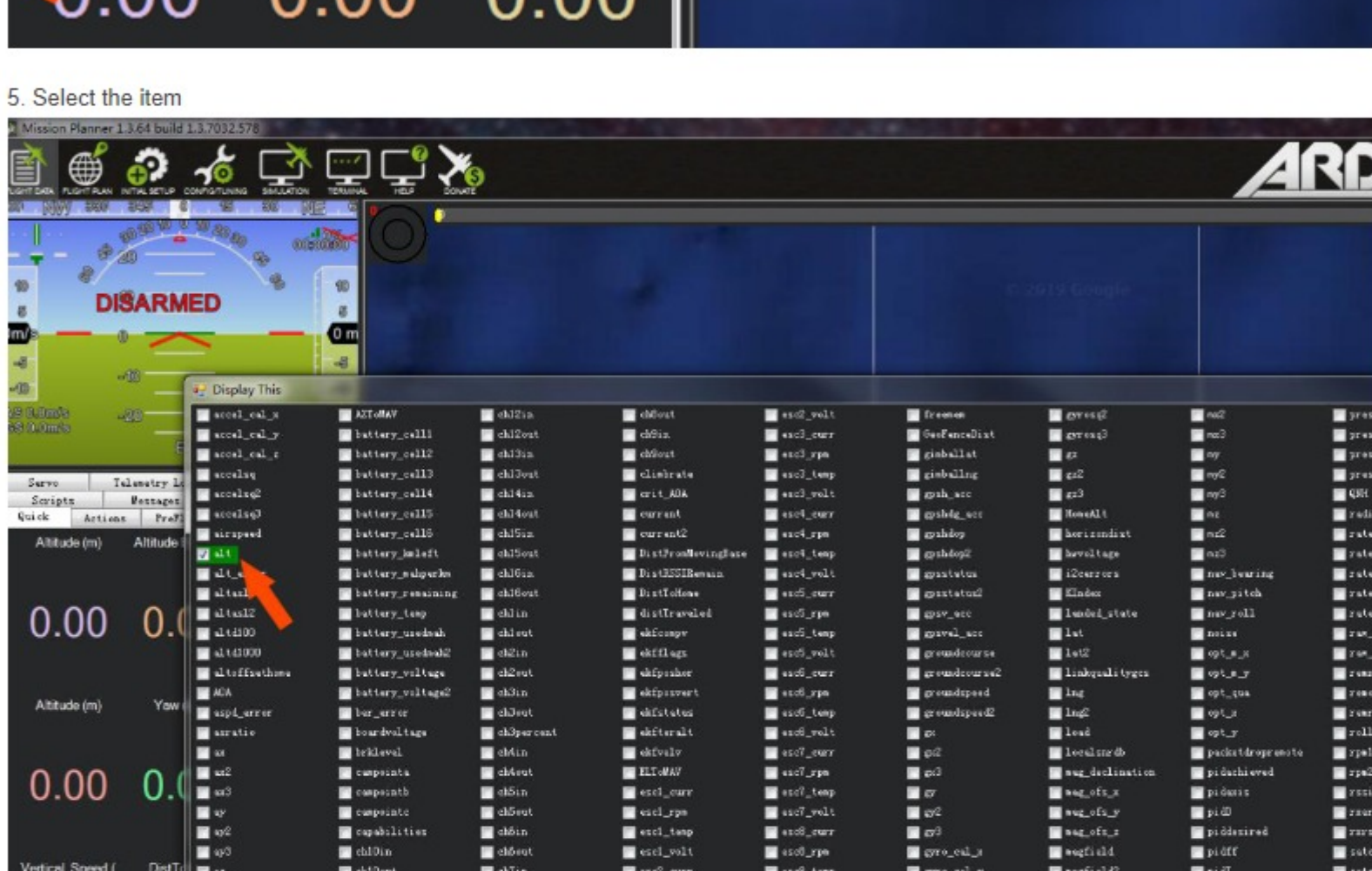
3. Enter 4 as the row number



4. Double click to change item



5. Select the item



Once you finished the first menu item setting and start the second one, you can skip step 1, 2, 3 and just carry out step 4, 5.

The remaining item settings are as such.

- Altitude(m): alt
- GroundSpeed(m/s): groundspeed
- AirSpeed(m/s): airspeed
- Dist to WP(m): wp_dist
- Bat Voltage(V): battery_voltage
- Bat used EST(mah): battery_usedmah
- Bat Current(Amps): current
- Dist to Home(m): DistToHome
- Time in Air(sec): timelnAir
- Dist Traveled(m): distTraveled
- Bat2 Voltage(V): battery_voltage2
- Wind Velocity(m/s): wind_vel